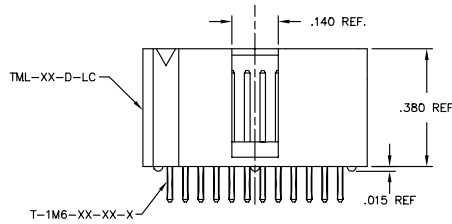
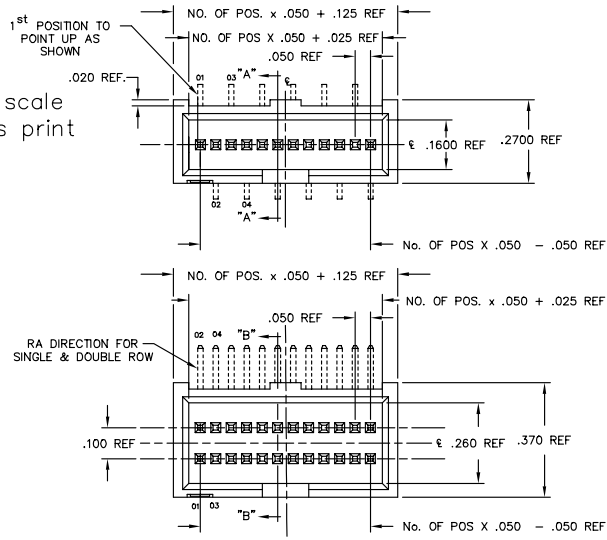


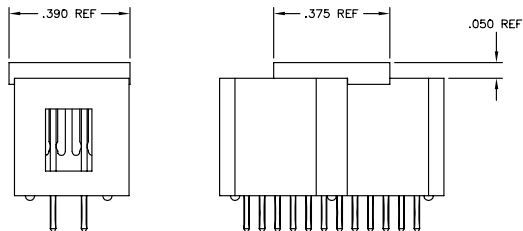
REV. AC

Do not scale from this print



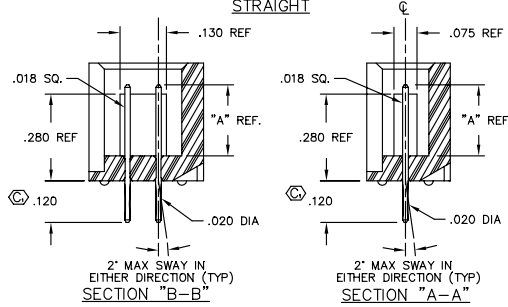
-P  
 PICK & PLACE PAD

NOTE: LOCATING NOTCH ON PAD TO BE PRESSED AGAINST MIDDLE STANDOFF ON BODY.

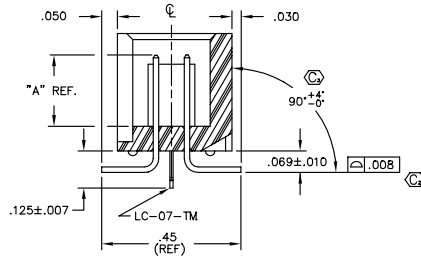


**PROPRIETARY NOTE**  
 THIS DOCUMENT CONTAINS INFORMATION OF SAMTEC INC. AND IS PROPRIETARY TO SAMTEC INC. ANY REUSE, REPRODUCTION OR TRANSMISSION OF THIS DOCUMENT IS STRICTLY PROHIBITED. SAMTEC INC. WILL BE HELD RESPONSIBLE FOR ANY DAMAGE OR LOSS OF DATA CAUSED BY THIS DOCUMENT. IT IS OBTAINED WITHOUT THE EXPRESS WRITTEN CONSENT OF SAMTEC INC.

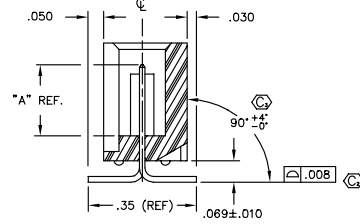
STRAIGHT



SURFACE MOUNT

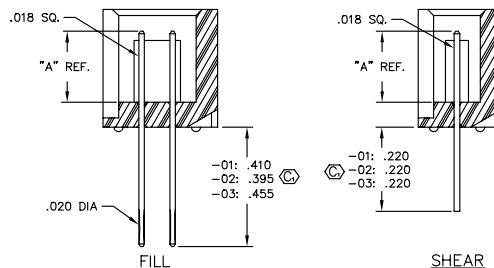


SECTION "B-B"



SECTION "A-A"

IN PROCESS



DIMENSIONS ARE IN INCHES UNLESS OTHERWISE NOTED		TOLERANCES ARE:		TITLE:	DWG NO.:
ONE PLACE DECIMALS ±.1	THREE PLACE DECIMALS ±.005	FOUR PLACE DECIMALS ±.0020	ANGLES ±.2°	TML ASSEMBLY	TML-1XX-XX-XX-X-XX-XXX
				SHEET 1 OF 1	

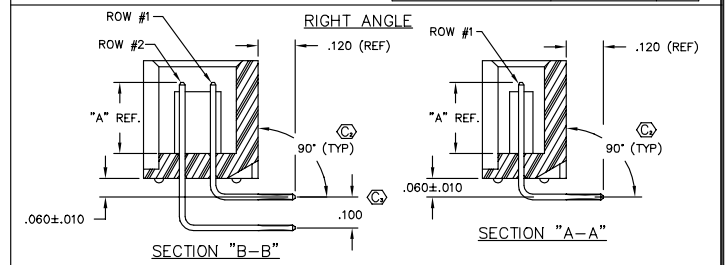
TML-1XX-XX-XX-X-XX-XXX

- NO. OF POSITIONS  
 -05 THRU -50
- LEAD STYLE  
 SEE TABLE 1
- PLATING SPECIFICATION  
 -G: GOLD (USE T-1M6-XX-G-2)  
 -T: TIN (USE T-1M6-XX-T-2)  
 -S: SELECTIVE (USE T-1M6-XX-S-2)  
 -F: FLASH SELECTIVE (USE T-1M6-XX-F-2)  
 -H: HEAVY GOLD (USE T-1M6-XX-H-2)  
 -SM: HEAVY GOLD SELECTIVE, MATTE TIN TAIL (USE T-1M6-XX-S-2)  
 -TM: MATTE TIN (USE T-1M6-XX-T-2)  
 -FM: FLASH GOLD SELECTIVE, MATTE TIN TAIL (USE T-1M6-XX-F-2)
- OPTION #2  
 -XXX: INDICATES POSITION OMITTED FOR POLARIZED ASSEMBLY (AVAILABLE FOR DOUBLE ROW SURFACE MOUNT ONLY) (USE LC-07-TM)  
 -P: PICK & PLACE PAD (USE PPP-22)
- OPTION #1  
 BLANK: STRAIGHT  
 -RA: RIGHT ANGLE  
 -SM: SURFACE MOUNT
- ROW SPECIFICATION  
 -D: DOUBLE (USE TML-XX-D)  
 -S: SINGLE (USE TML-XX-S)

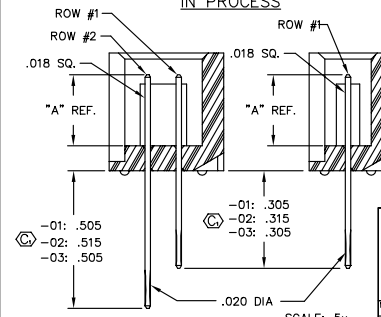
LEAD STYLE	"A"	RIGHT ANGLE		SURFACE MOUNT (SINGLE & DOUBLE ROW)
		ROW #1 (SINGLE ROW)	ROW #2	
-01	.120	T-1M6-17-XX-2	T-1M6-04-XX-2	T-1M6-03-XX-2
-02	.230	T-1M6-12-XX-2	T-1M6-13-XX-2	T-1M6-05-XX-2
-03	.170	T-1M6-26-XX-2	T-1M6-14-XX-2	T-1M6-05-XX-2

NOTE:  
 1. Ⓢ REPRESENTS A CRITICAL DIMENSION.

OPTIONS	PACKAGING TUBE	PLUS
-D-SM	PT-1-24-01-08	TP-13
-D-SM-LC, -D-SM-LC-P	PT-1-24-02-08	TP-13
-D-RA	PT-TML001-RA	TP-07



IN PROCESS



PLOT SCALE: 1 = .2  
 EXPROD ASSEMBLY 000  
 TML-ASM

**samtec**

520 PARK EAST BLVD. NEW ALBANY, INDIANA 47150  
 PHONE (812) 944-6733 F.O. BOX 1147  
 CODE 55322

MADE BY: BRYANT B-7-90  
 CHECKED BY: ECKERT  
 APPROVAL: DEM  
 TML-1XX-XX-XX-X-XX-XXX